



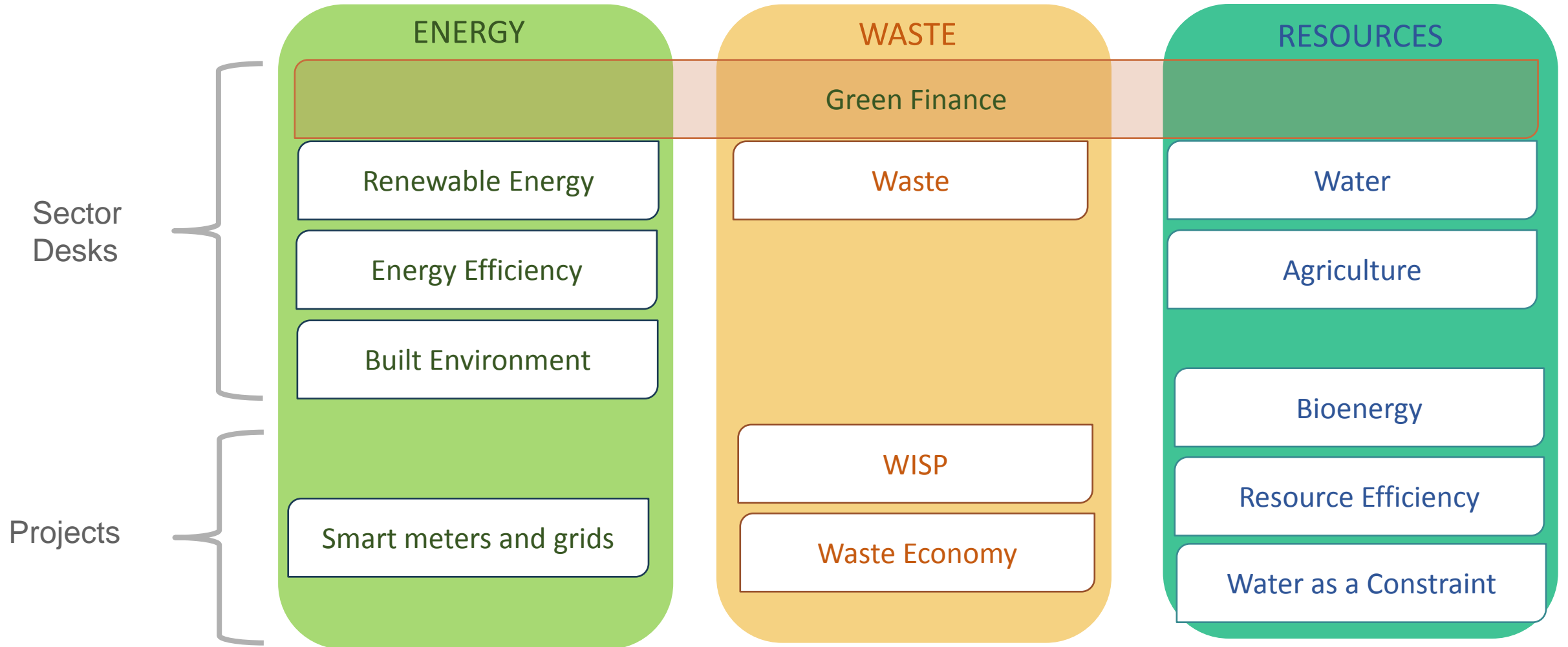
www.greenagri.co.za

IAIA Green Agriculture
03/11/2015

Presentation overview

- Overview of GreenCape
- GreenAgri Portal:
- Project partners
- Why it was created
- Examples of what is featured
- User analytics
- Conclusion
- Way forward

Overview of GreenCape



GreenAgri: Project Partners

- WCDDoA initiative
- Partnered with GreenCape, because of expected advantages
- Real need for relevant and reliable information on sustainability
- How do we package such information so it is easily accessible?

Anticipated advantages

- Provide a platform for industry participants to actively discuss 'green' matters.
- Allow users the opportunity to network with 'green' industry participants.
- It will allow for greater understanding of 'green' policies and activities undertaken by the Western Cape Government.
- It can assist with the collection of data as well as obtaining feedback on proposed policies, projects and initiatives.
- It could assist industry participants to keep up to date with the ever changing 'green' policies, practices and inventions.



Find out more about
funding incentives

read more



- Web based portal for sustainable agriculture production information
- One-stop portal for all farmers, researchers, private and non-governmental agencies
- Launched 09/09/2015
- Engaged with various role players

Stakeholder engagements

- Agri Weskaap
- SAB
- GrainSA
- CCC
- DEADP
- Woolworths
- CS4 Solutions
- WWF
- CSIR
- Vinpro
- Winetech
- SAWIS
- SA mohair
- Cape Wool
- Water Affairs
- Nemlab
- Hortgro
- Citrus Growers Association
- SANBI
- WESGRO
- NCPC
- DEDAT
- ACTOM
- Aerovision
- Aerobotics
- SATI
- NMMU
- CPUT
- NWGA
- SAWMA
- Living Lands
- Green Choice Alliance
- Flower Valley Conservation Fund
- FSD extension Symposium
- Koos Bouwer consulting
- Charl De Villiers consulting
- SmartAgri project team
- US
- SOILL (*)
- Potatoe SA
- UCT
- Red meat producers SA (*)
- PorkSA
- Cape Nature (*)
- Ostrich Chambers (*)
- DEADP
- IPW
- ARC (*)
- Biodynamic Society SA
- Western Cape Boardband



OneCape 2040



[Action Plans & Policies](#) » [Provincial](#) » OneCape 2040

+ Provincial

Provincial Strategic Plan

Provincial Strategic Goals

OneCape 2040

Western Cape Green Economy
Strategy Framework

Provincial Land Transport
2011/2012-2015/2016

ONECAPE2040 is a deliberate attempt to stimulate a transition towards a more inclusive and resilient economic future for the Western Cape region. It articulates a vision about how we, the people of the Western Cape, can work together to develop our economy and our society. It seeks to set a common direction to guide planning and action and to promote a common commitment and accountability to sustained long-term progress. [Read more.](#)



Fruitlook



[Tips & Tools](#) » [Online Tools](#) » [Fruitlook](#)

+ Useful Tips

+ Online Tools

[Cape Farm Mapper](#)

[Western Cape Agri Stats](#)

[CCC - Fruit & Wine Calculator](#)

[Climate Information Platform](#)

[Fruitlook](#)

[CAMIS](#)

[The Water Risk Filter](#)

[Water Quality Data Exploration Tool](#)

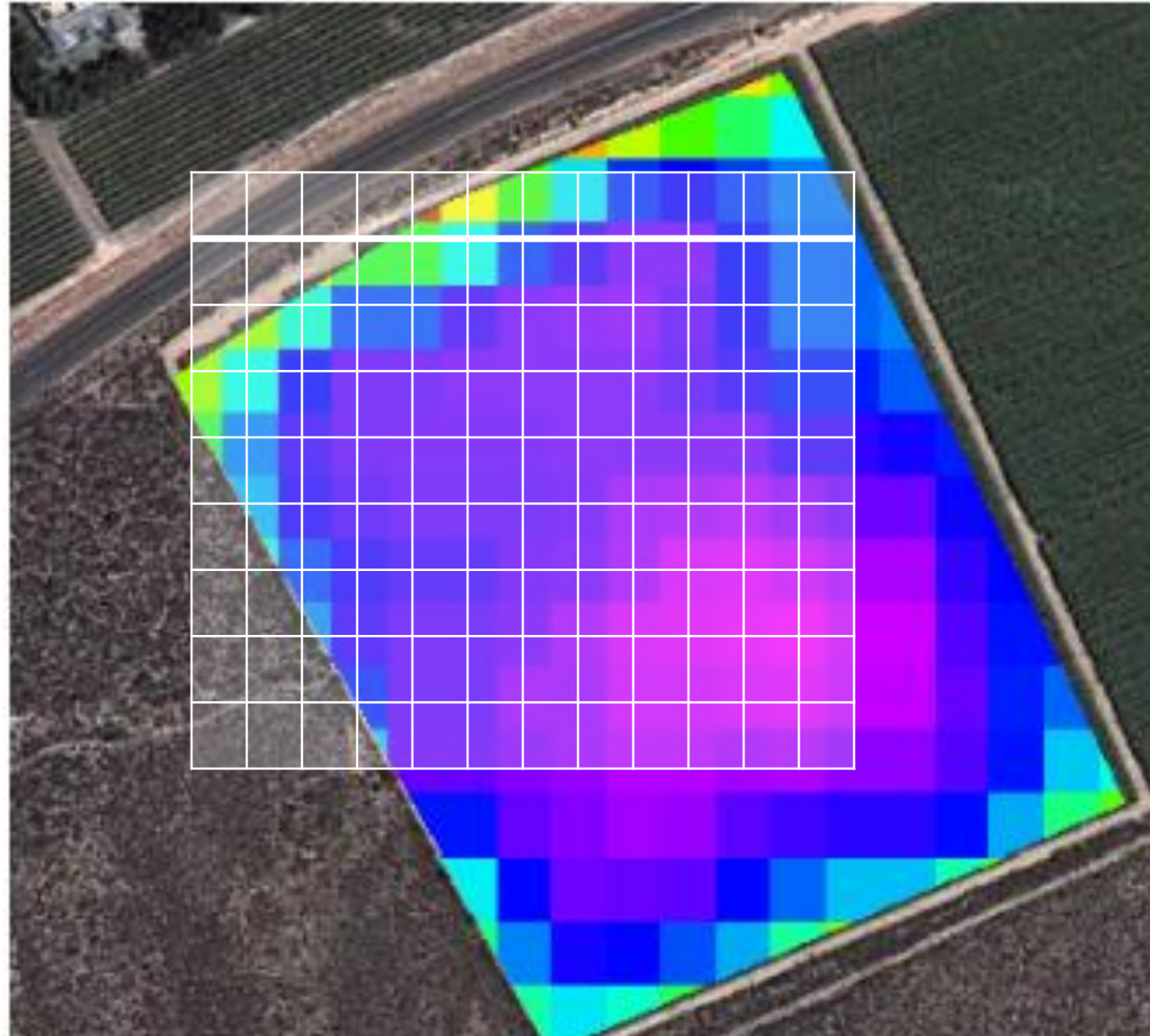
[Land Use Decision Support Tool and](#)

Farmers in the Western Cape face greater competition for irrigation water with other sectors, while rainfall is also becoming less predictable due to climate change. Irrigated agriculture in the Western Cape is challenged to increase production while reducing the amount of water used. Therefore farmers need to increase their water-use efficiency. With this background the Western Cape Department of Agriculture funded the development of an open web portal, called FruitLook, where Western Cape fruit and grape growers can access satellite-based information on their own crop growth and water use.

FruitLook provides weekly updates on 9 growth parameters such as actual evapotranspiration, biomass production and leaf nitrogen content, all of which can help farmers understand the effects of farm management on their crop. On FruitLook, wine and fruit farmers can register their irrigation blocks and analyse crop growth and water status over time and space during the growth season. FruitLook data is provided at a 20m x 20m spatial resolution, showing detailed variation across an irrigation block. Variations in biomass production between the different blocks and within the blocks themselves are visible.

FruitLook can help clarify why yields in one field are higher than in others or what the effect is of irrigation scheduling on crop growth. Simultaneously FruitLook enables the wise use of fresh water supplies in the Western Cape.

Spatial distribution of actual crop water use (ET)





CCC - Fruit & Wine Calculator



[Tips & Tools](#) » [Online Tools](#) » CCC - Fruit & Wine Calculator

+ Useful Tips

+ Online Tools

[Cape Farm Mapper](#)

[Western Cape Agri Stats](#)

[CCC - Fruit & Wine Calculator](#)

[Climate Information Platform](#)

[Fruitlook](#)

[CAMIS](#)

[The Water Risk Filter](#)

[Water Quality Data Exploration Tool](#)

SA's fruit and wine industry and their partners have done a three-year study on carbon foot printing to help growers and service providers measure their carbon emissions. With this tool you will be able to highlight where in your production line the biggest contributors to your carbon footprint is. By addressing these areas you are not only reducing your carbon footprint, but also will be able to manage and/or reduce your input cost.

Some Aims of the Project:

- * To highlight opportunities and threats regarding climate change in the agricultural sector.
- * To create a standard for GHG auditing in the fruit and wine sector.

The Confronting Climate Change (CCC) Project is a strategic cross-industry initiative aimed at supporting the South African fruit and wine sectors' efforts to effectively realise and respond to the opportunities and challenges posed by climate change.

Input & Questions

In order to make the GreenAgri site a valuable resource and helpful tool for all stakeholders, we need feedback and requests from you. This is also a section where you can ask questions or request information regarding sustainable agriculture.

[read more](#)

Please complete this form

Name and surname

Phone number

Email

Type of organisation

Which area in the Western Cape are you located?

What commodities do you farm/work with?

- ☐ Fruits
- ☐ Grains
- ☐ Livestock
- ☐ Pastures
- ☐ Vegetables
- ☐ Other

Specify the commodities you work with

Your comments/ input



Soil Health



[FAQ's](#) » [Soil Health](#)

[Energy](#)

[General Sustainability](#)

[Plants](#)

[Soil Health](#)

[Water](#)

Soil Diagnostics

Where can I find information on soil management in the renosterveld?

[Landowner's Guide to Soil in Renosterveld Areas](#)

Where can I do soil, water and plant diagnostics in the Western Cape?

[Elsenburg Soil Water Plant Diagnostics](#)

Contact details can be found at the link.



LandCare



[Projects & Research](#) » [General Sustainability](#) » [Invasive Alien Species](#) » [LandCare](#)

Energy

Aquaculture

+ General Sustainability

Biodiversity

Urban Agriculture

Waste

Other

+ Invasive Alien Species

Other

LandCare

Cape Winelands:

- Agter Groenberg Alien Clearing. Department of Agriculture 2014/2015.
- Bottelary LandCare. Department of Agriculture 2014/2015.
- LandCare Awareness Cape Winelands. Department of Agriculture 2014/2015.
- Simonsberg AWP LandCare. Department of Agriculture 2014/2015.
- Tulbagh Alien Clearing Project. Department of Agriculture 2014/2015.
- Upper Breederiver: Restoration and Greening Project. Department of Agriculture 2014/2015.
- Upper Breederivier Valley Alien Clearing. Department of Agriculture 2014/2015.

Tulbagh Alien Clearing Project. Department of Agriculture 2014/2015.

Project Purpose

The purpose of this project is binary as explained as follows: Tulbagh is experiencing pressure on their water resources as in the quantity and the quality of the water. This problem has an impact not only on Tulbagh itself but also on the people living in the metro pole making use of the water from the Voëlvlei dam that receives water from the Little Berg River that originates in the valley of Tulbagh. The first purpose will be the cleaning of invasive alien trees and restoration of some of the sites as one tool in the process to insure more and better quality water and the second purpose will be job creations and training of local disadvantage people.

Prepared by: van der Merwe, J.H.

Lead Institution: Department of Agriculture, Western Cape. Sustainable Resource Management: LandCare Division.

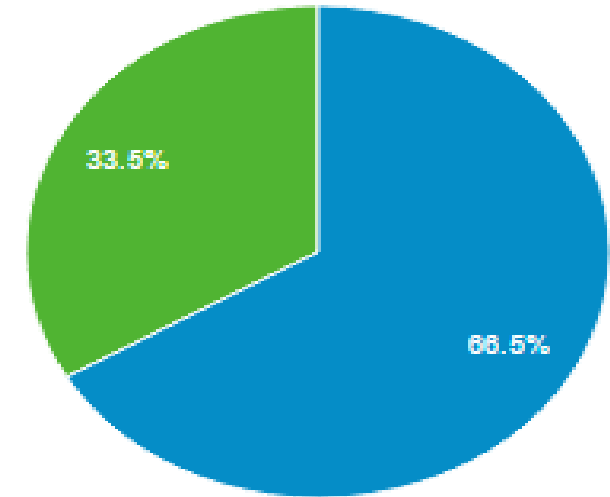
Partner Institution: TWA, Working for Water; Cape Nature & Cape Wine lands District Municipality.

[Full project note.](#)

User Analytics

City	Sessions	% Sessions
1. Cape Town	546	53.79%
2. Stellenbosch	85	8.37%
3. (not set)	65	6.40%
4. Sandton	52	5.12%
5. Pretoria	37	3.65%
6. Port Elizabeth	17	1.67%
7. Johannesburg	12	1.18%
8. Hermanus	12	1.18%
9. Centurion	8	0.79%
10. Paarl	8	0.79%

■ New Visitor ■ Returning Visitor



- 659 Users since launch
- Increasing number of international users

Conclusion



- Conventional agriculture is not sustainable
- Farmers need to take to take a holistic approach
- Portal contributes to filling knowledge and information gap
- Green Tech opportunities for industry

The way forward

- A new and exciting project that we will continuously work to improve
- Marketing campaign to create awareness
- Stakeholder feedback
- Please give us your input!



Thank you!

inge@greencape.co.za

jannie@greencape.co.za

www.greenari.org.za