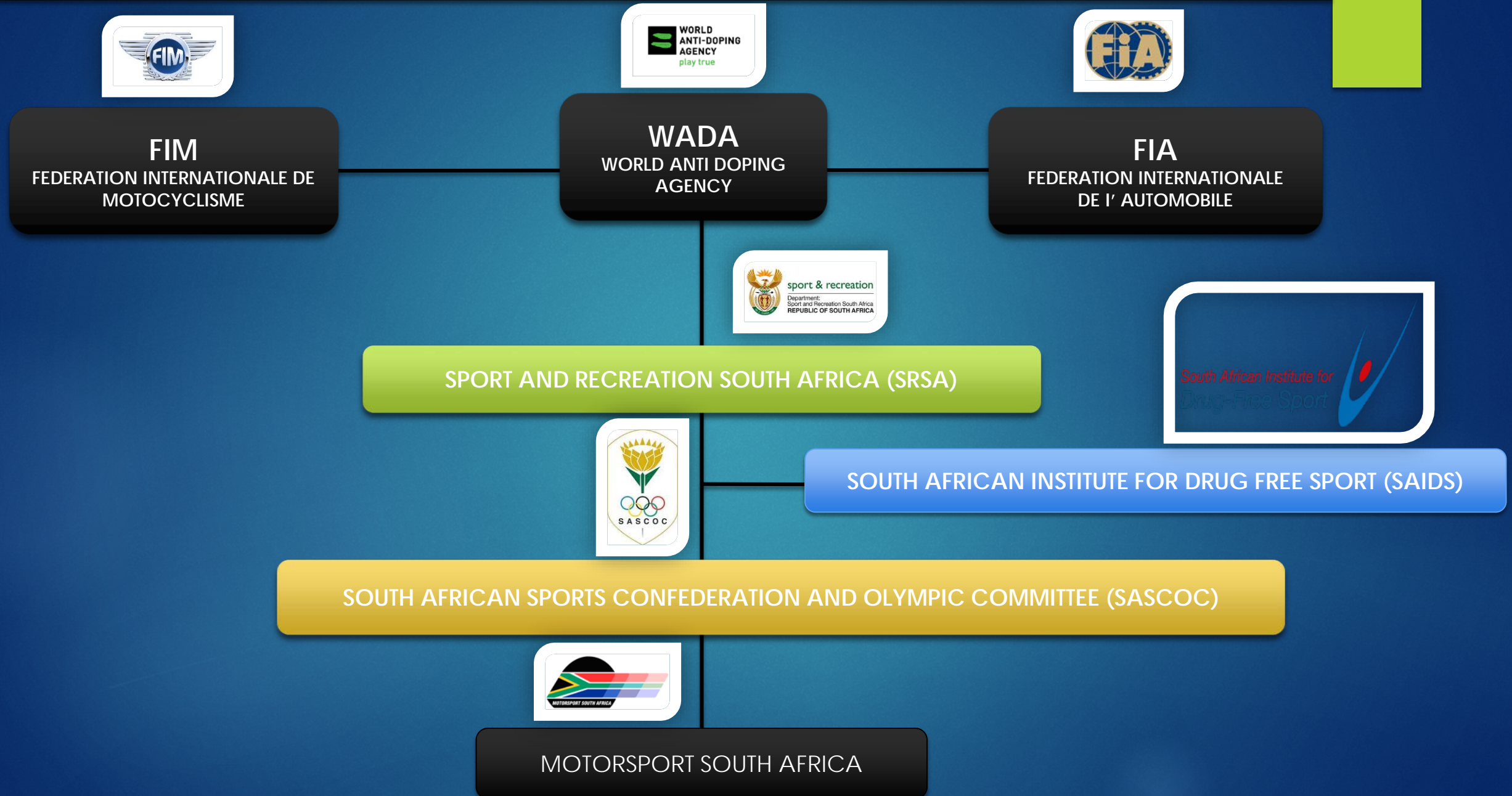




MOTORSPORT SOUTH AFRICA

INFORMATION AND STRUCTURES

ORGANISATIONAL STRUCTURE – MSA AUTHORITY





MSA INTERNAL STRUCTURE



MSA FUNCTIONS

Formulates, Compiles / Distributes:

- Sporting Policy
- Technical Rules and Regulations
- Annual Motorsport Calendar
- National and Regional Championships Scoring



Issues / Publishes:

- Competitor Licences
- Official Licences
- National and Regional Circulars
- Media Releases
- Court Findings
- Informative and updated website & Social Media

Ensures:

- Conformity of South African motorsport regulations with FIA, CIK and FIM International Sporting Codes
- Conformity and compliance with WADA Anti-Doping Regulations
- Compliance with Ministry of Sport and SASCOC laws, statutes and requirements
- Qualification of licensed officials
- Safety of competitors, officials and spectators at all events
- Attendance of qualified medical personnel at events
- Transparent and clean administration of the sport and all financial matters
- Transformation within motorsport at all levels
- Awareness and protection of environment

Negotiates and Arranges:

- Competitor and Official Insurance at unbeatable premiums for best cover
- Public Liability Insurance (claims by third parties)
- Democratic and fair Courts to deal with Protests, Appeals and Enquiries to ensure effective, fair and equal treatment for all competitors, officials, organisers and sponsors
- The awarding of National Colours to competitors who meet the Protea Colours Criteria

Controls:

- Commercial Rights for all categories of motorsport
- Awarding of South African and Regional Championship titles

Implements:

- Special projects whenever deemed necessary
- Development programmes

Promotes:

- The interests of South African motorsport
- Equality in motorsport

MSA COMMISSIONS/STEERING COMMITTEE/WORKING GROUPS

SPORTING COMMISSIONS:

Circuit Motorcycle Commission
Historic Commission
Karting Commission
Motocross Commission
Non Circuit Motorcycle Commission
(Enduro, Offroad & Quads)

SPECIALIST PANELS:

Environmental Panel
Medical Panel

STEERING COMMITTEE/WORKING GROUPS

National Rally Steering Committee
Scrutineering Working Group
Safety Working Group

MSA REGIONS



- Border
- Eastern Province
- Free State/Northern Cape
- Kwazulu Natal
- Northern Regions
- Western Cape